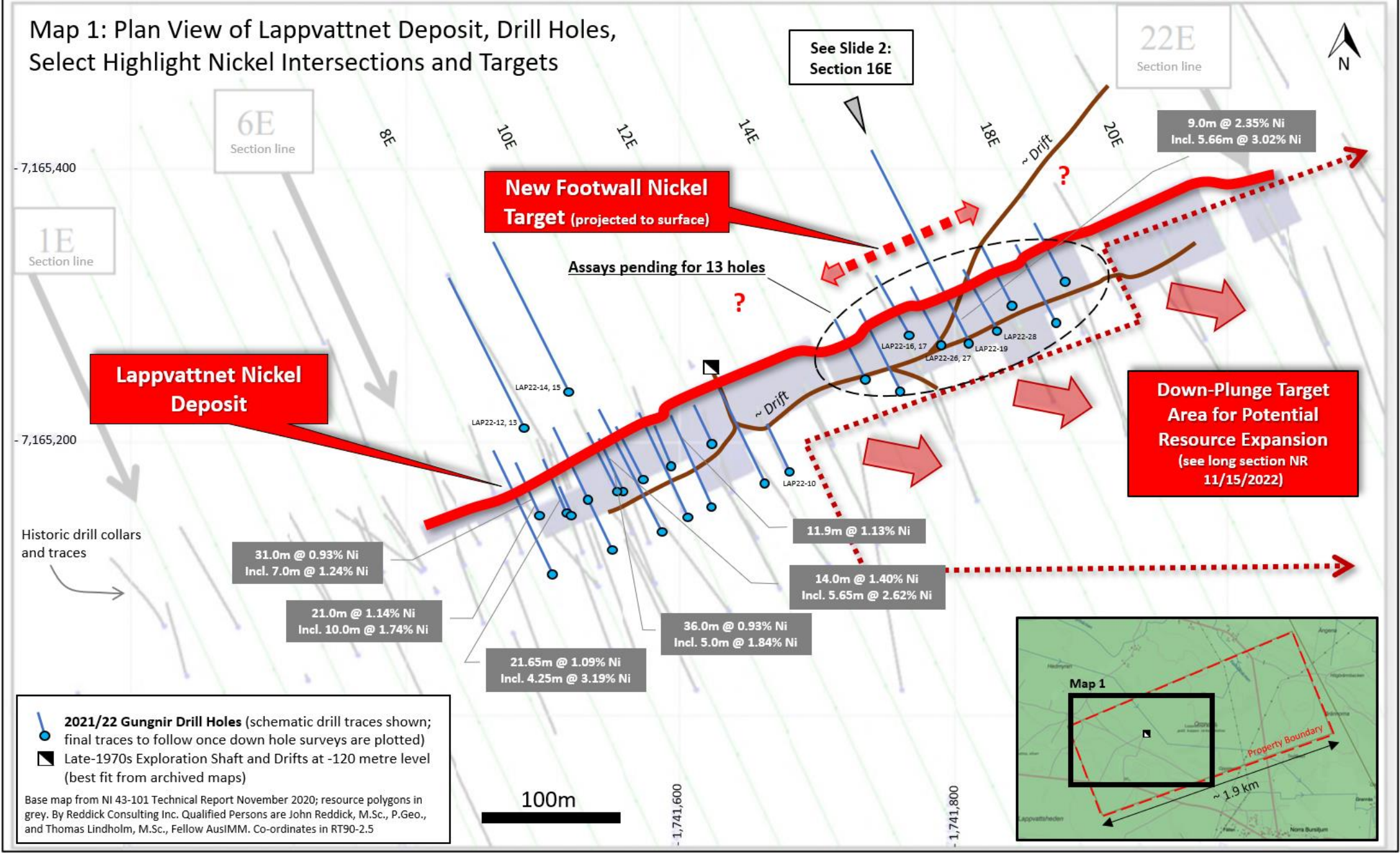


Map 1: Plan View of Lappvattnet Deposit, Drill Holes, Select Highlight Nickel Intersections and Targets



Lappvattnet Nickel Deposit

New Footwall Nickel Target (projected to surface)

Down-Plunge Target Area for Potential Resource Expansion (see long section NR 11/15/2022)

31.0m @ 0.93% Ni
Incl. 7.0m @ 1.24% Ni

21.0m @ 1.14% Ni
Incl. 10.0m @ 1.74% Ni

21.65m @ 1.09% Ni
Incl. 4.25m @ 3.19% Ni

36.0m @ 0.93% Ni
Incl. 5.0m @ 1.84% Ni

11.9m @ 1.13% Ni

14.0m @ 1.40% Ni
Incl. 5.65m @ 2.62% Ni

9.0m @ 2.35% Ni
Incl. 5.66m @ 3.02% Ni

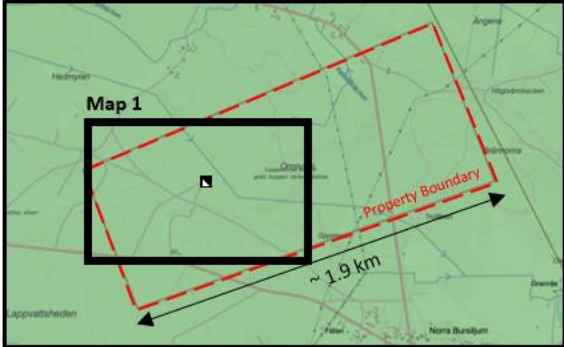
- 2021/22 Gungnir Drill Holes (schematic drill traces shown; final traces to follow once down hole surveys are plotted)
- Late-1970s Exploration Shaft and Drifts at -120 metre level (best fit from archived maps)

Base map from NI 43-101 Technical Report November 2020; resource polygons in grey. By Reddick Consulting Inc. Qualified Persons are John Reddick, M.Sc., P.Geo., and Thomas Lindholm, M.Sc., Fellow AusIMM. Co-ordinates in RT90-2.5

100m

-1,741,600

-1,741,800



Map 1

~ 1.9 km



22E
Section line

See Slide 2:
Section 16E

6E
Section line

1E
Section line

-7,165,400

-7,165,200

Historic drill collars and traces

8E

10E

12E

14E

18E

20E

~ Drift

~ Drift

LAP22-16, 17

LAP22-26, 27

LAP22-19

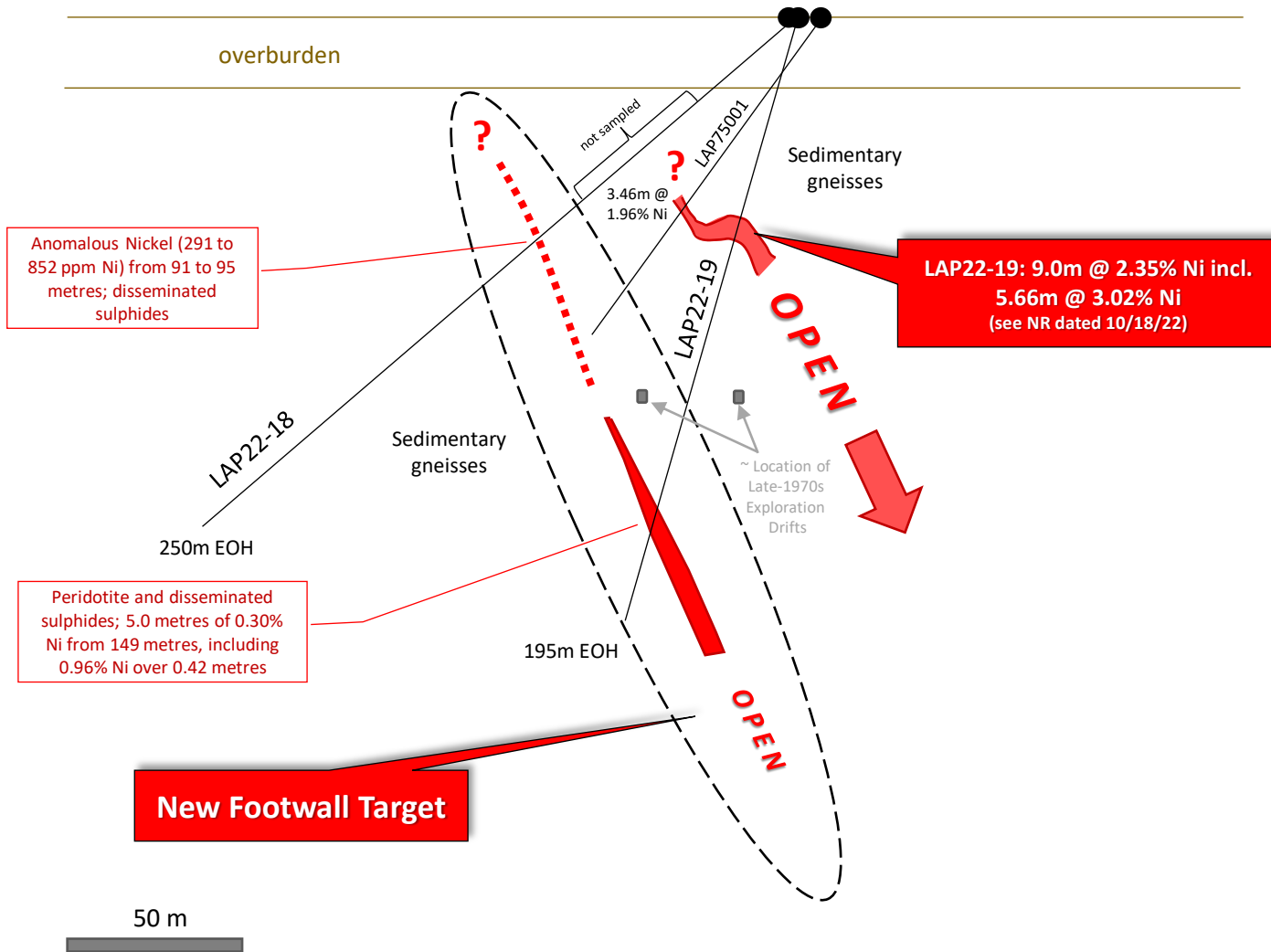
LAP22-28

LAP22-14, 15

LAP22-12, 13

LAP22-10

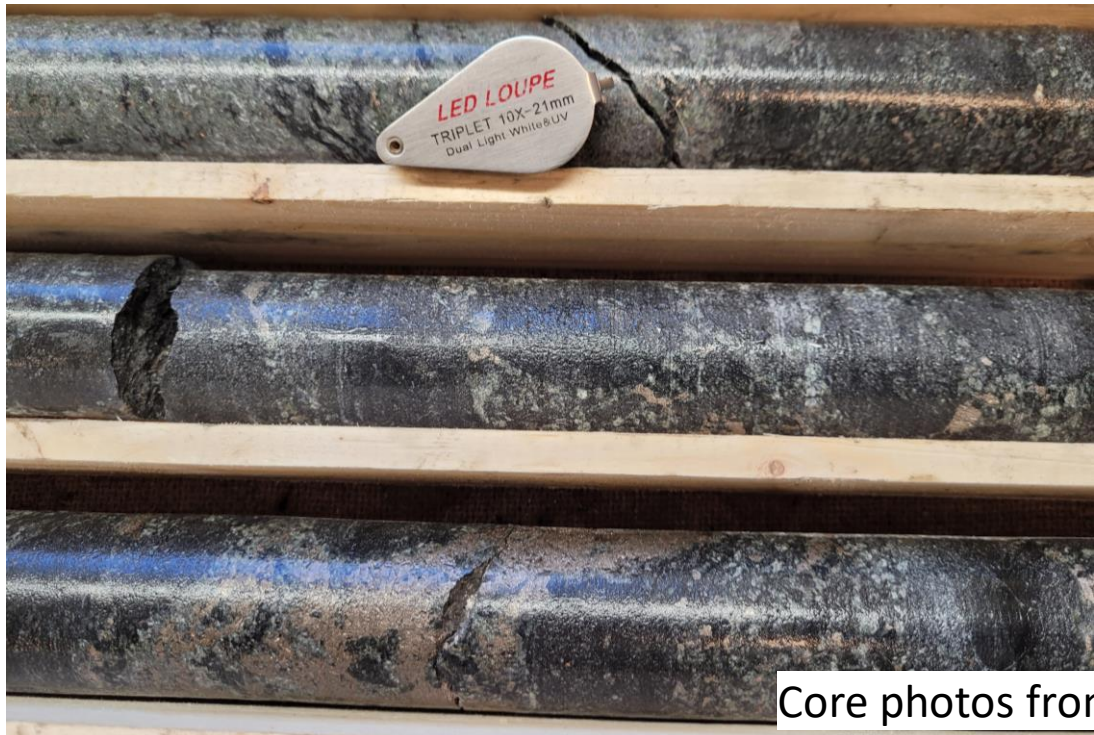
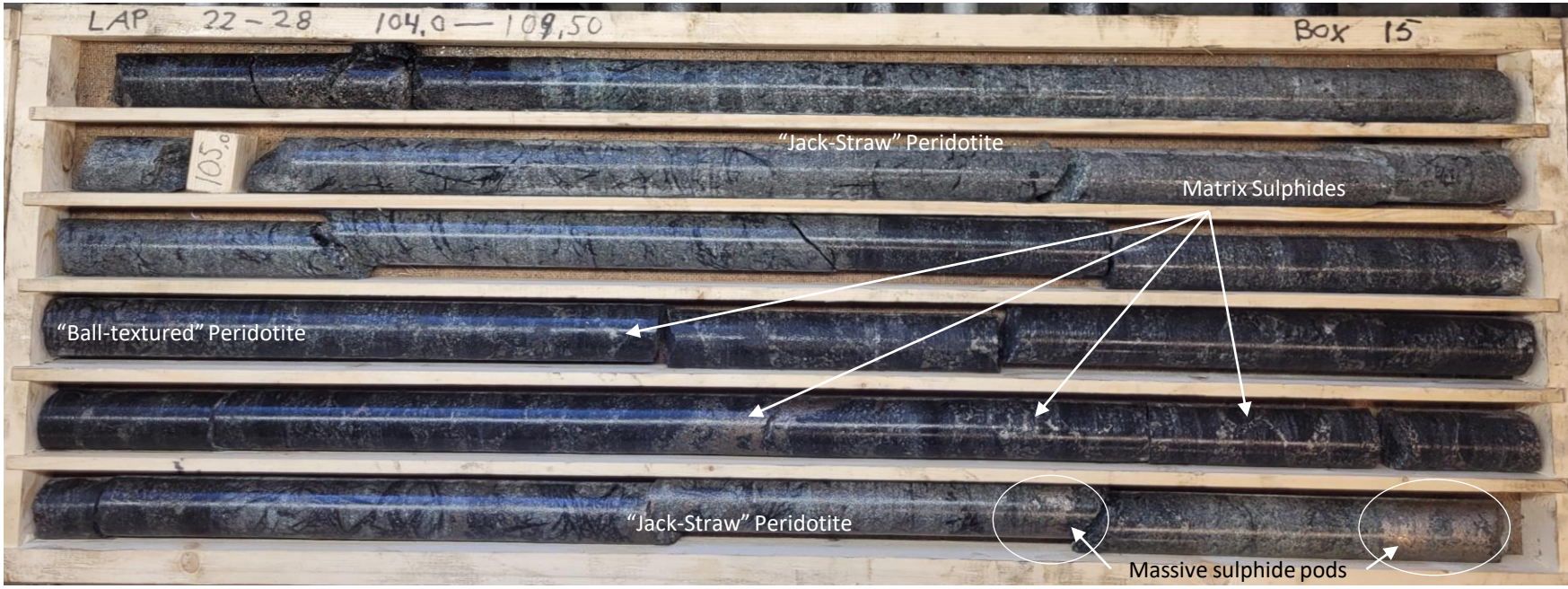
Slide 2: New Footwall Nickel Target: Lappvattnet Schematic Section 16E – Looking East



LAP22-18 and -19 (Gungnir 2022 holes); LAP75001 (Historic hole). EOH = End of hole. Schematic cross-section is preliminary, final sections to follow.

2021/2022 Drill Co-ordinates

Section East	Hole_ID	East RT90	North RT90	Elevation	Length	Azimuth	Dip
8	LAP21-01	1741514.0	7165152.0	80.00	100.45	340	-75
8	LAP21-02	1741517.0	7165150.0	80.00	74.55	340	-45
9	LAP21-03	1741550.0	7165168.0	79.46	77.50	340	-45
9	LAP21-04	1741555.0	7165169.0	79.46	98.20	340	-75
9	LAP21-05	1741555.0	7165169.0	79.46	100.30	340	-85
10	LAP21-06	1741589.0	7165186.0	78.73	75.55	340	-75
10	LAP21-07	1741589.0	7165186.0	78.73	49.70	340	-45
11	LAP21-08	1741620.0	7165201.0	79.82	73.80	340	-75
9.5	LAP21-09	1741530.0	7165161.0	79.00	101.80	340	-65
9.5	LAP21-10	1741530.0	7165161.0	79.00	101.70	340	-80
9.5	LAP21-11	1741530.0	7165161.0	79.00	74.60	340	-50
7.5	LAP21-12	1741495.0	7165151.0	78.00	80.00	340	-65
7.5	LAP21-13	1741494.0	7165152.0	78.00	77.30	340	-45
10.5	LAP21-14	1741571.0	7165176.0	79.00	101.70	340	-60
10.5	LAP21-15	1741571.0	7165176.0	79.00	124.40	340	-80
10.5	LAP22-01	1741620.5	7165156.1	78.98	131.80	335	-65
9.5	LAP22-02	1741584.6	7165140.9	79.78	143.80	335	-65
8.5	LAP22-03	1741547.5	7165126.7	80.65	152.60	335	-65
7.5	LAP22-04	1741503.0	7165108.1	79.14	150.30	335	-70
7.5	LAP22-05	1741502.9	7165108.4	79.29	126.00	335	-55
11.5	LAP22-06B	1741659.4	7165173.2	78.10	151.90	335	-55
10	LAP22-07	1741602.3	7165149.5	79.41	150.50	335	-67
10.5	LAP22-08	1741620.0	7165157.1	78.97	125.00	335	-45
12	LAP22-09	1741676.2	7165181.2	77.61	126.00	335	-50
12	LAP22-10	1741677.0	7165179.3	77.73	162.20	335	-67
8	LAP22-12	1741483.3	7165212.8	80.54	153.00	335	-45
8	LAP22-13	1741483.5	7165212.2	80.60	205.00	335	-65
9	LAP22-14	1741515.6	7165238.3	79.37	150.00	335	-45
9	LAP22-15	1741515.9	7165237.9	79.38	201.50	335	-65
15	LAP22-16	1741764.2	7165279.0	76.79	75.00	335	-45
15	LAP22-17	1741764.2	7165279.0	76.60	100.40	335	-75
16	LAP22-18	1741801.9	7165273.2	76.67	248.80	335	-45
16	LAP22-19	1741802.3	7165272.4	76.49	193.70	335	-75
17	LAP22-20	1741843.3	7165291.4	76.48	75.00	335	-45
17	LAP22-21	1741843.5	7165290.7	76.19	101.50	335	-75
18	LAP22-22	1741880.0	7165316.7	76.16	75.00	335	-45
18	LAP22-23	1741880.2	7165316.1	76.20	100.75	335	-75
14	LAP22-24	1741733.4	7165247.3	77.12	76.40	335	-45
14	LAP22-25	1741733.8	7165246.4	77.10	111.10	335	-75
15.5	LAP22-26	1741789.0	7165271.5	76.70	100.70	335	-45
15.5	LAP22-27	1741789.0	7165272.0	76.68	150.10	335	-65
16.5	LAP22-28	1741829.0	7165282.0	76.50	155.00	335	-55
16.5	LAP22-29	1741829.0	7165282.0	76.50	180.20	335	-75
17.5	LAP22-30	1741872.0	7165290.0	76.14	126.10	335	-65
14.5	LAP22-31	1741760.0	7165239.0	76.84	126.20	335	-65



Core photos from hole LAP22-28; assays pending